

Barrier Protectant Cream

Medically reviewed by Drugs.com. Last updated on Jan 26, 2020.

Dosage form: ointment

Ingredients: MENTHOL 1mg in 1g, ZINC OXIDE 200mg in 1g

Labeler: Cardinal Health

NDC Code: 63517-003

Further information

Always consult your **healthcare provider** to ensure the information displayed on this page applies to your personal circumstances.

Barrier Protectant Cream

Active ingredients

- Menthol 0.1%
- Zinc oxide 20%

Purpose

- Anorectal analgesic
- Skin protectant

Uses

A moisture barrier that provides temporary relief from skin irritations caused by •urine •diarrhea •perspiration •fistula drainage •feeding tube site leakage •wound drainage (peri-wound skin) •minor burns •cuts •scrapes •anorectal itching •chafing

Dries the oozing and weeping of poison •ivy •oak •sumac

Warnings

For external use only.

- Avoid contact with the eyes
- Stop use and contact a physician if condition worsens, symptoms last more than 7 days, or clear up and occur again within a few days.

- Keep out of reach of children
- If swallowed, get medical help or contact Poison Control Center right away.

Do not use:

- On deep or puncture wounds
- Animal bites
- Serious burns

Keep out of reach of children.**Directions**

- Gently cleanse and remove any urine or fecal matter from the treatment area
- Pat dry
- Apply a generous amount of product to the affected area
- Repeat after every incontinent episode or as needed
- For peri-G tubes: •Cleanse as above •Apply thin layer •Secure with drain sponge or product as directed.

Other information

Store between 59°-86°F (15°-30°C)

Inactive Ingredients

Active aloe gel, Calamine, Chamomilla recutita (matricaria) flower extract, Cod liver oil, Disodium EDTA, Glycerin, Lanolin, Light mineral oil, Manuka honey, Methylparaben, Microcrystalline wax, Petrolatum, Propylparaben, Sodium borate, Sorbitan oleate, Tocopherol, Water

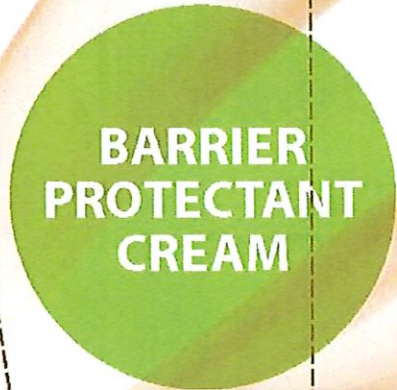
Barrier Protectant Cream Labeling**Tube Label (2 oz)**

Cat: CSC-CRMBH2 Dist. by: Cardinal Health
 Waukegan, IL 60085 USA 10/14
 ©2014 Cardinal Health. The CARDINAL HEALTH
 name and logo are trademarks of Cardinal Health.



NDC 63517-003-32

Drug Facts	
Active Ingredients	Purpose
Menthol 0.1%	Anorectal Analgesic
Zinc Oxide 20.0%	Skin protectant
Uses: A moisture barrier that provides temporary relief from skin irritations caused by: •urine •diarrhea •perspiration •fistula drainage •feeding tube site leakage •wound drainage (peri-wound skin) •minor burns •cuts •scrapes •anorectal itching •chafing. Dries the oozing and weeping of poison: •ivy •oak •sumac.	
Warnings: For external use only. •Avoid contact with the eyes •Stop use and contact a physician if condition worsens, symptoms last more than 7 days or clear up and occur again within a few days. •Keep out of reach of children •If swallowed, get medical help or contact Poison Control Center right away. Do not use: •On deep or puncture wounds •Animal bites •Serious burns	
Directions: •Gently cleanse and remove any urine or fecal matter from treatment area •Pat dry •Apply a generous amount of product to the affected area •Repeat after every incontinent episode or as needed •For peri-G tubes: •Cleanse as above •Apply thin layer •Secure with drain sponge or product as directed.	
Other Information: •Store between 15-30°C (59-86°F)	
Inactive Ingredients: Petrolatum, Water, Microcrystalline Wax, Lanolin, Sorbitan Oleate, Glycerin, Light Mineral Oil, Calamine, Sodium Borate, Manuka Honey, Disodium EDTA, Aloe Barbaderensis Leaf Juice, Methylparaben, Propylparaben, Chamomilla Recutita (Matricaria) Flower Extract, Tocopherol, Cod Liver Oil	



With Zinc Oxide
 and Menthol
 Contains Manuka Honey



CardinalHealth

Net Wt.
 2oz (56.7g)

3/16"	NO	LABEL	AREA3	/16"
CAP COLOR				

Tube Label (4 oz)

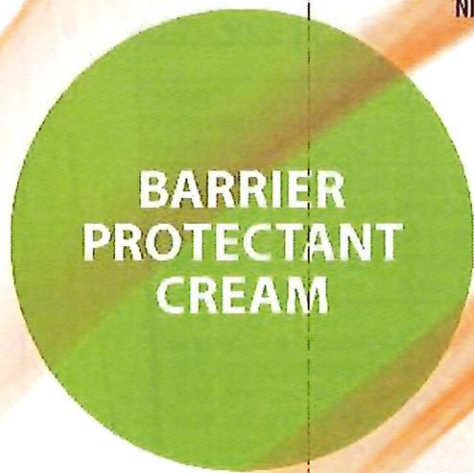
Cat: CSC-CRMBH4

Distributed by:
Cardinal Health
 Waukegan, IL 60085 USA 10/14
 cardinalhealth.com



NDC63517-003-31

© 2014 Cardinal Health. All rights reserved. CARDINAL HEALTH and the Cardinal Health LOGO are trademarks or registered trademarks of Cardinal Health. All other marks are the property of their respective owners.



With Zinc Oxide and Menthol
 Contains Manuka Honey

Drug Facts	
Active Ingredients.....	Purpose
Menthol 0.1%	Anorectal Analgesic
Zinc Oxide 20.0%	Skin protectant
Uses: A moisture barrier that provides temporary relief from skin irritations caused by: •urine •diarrhea •perspiration •fistula drainage •feeding tube site leakage •wound drainage (peri-wound skin) •minor burns •cuts •scrapes •anorectal itching •chafing. Dries the oozing and weeping of poison: •ivy •oak •sumac.	
Warnings: For external use only. •Avoid contact with the eyes •Stop use and contact a physician if condition worsens, symptoms last more than 7 days or clear up and occur again within a few days. •Keep out of reach of children •If swallowed, get medical help or contact Poison Control Center right away. Do not use: •On deep or puncture wounds •Animal bites •Serious burns	
Directions: •Gently cleanse and remove any urine or fecal matter from treatment area •Pat dry •Apply a generous amount of product to the affected area •Repeat after every incontinent episode or as needed •For peri-G tubes: •Cleanse as above •Apply thin layer •Secure with drain sponge or product as directed.	
Other Information: •Store between 15-30°C (59-86°F)	
Inactive Ingredients: Petrolatum, Water, Microcrystalline Wax, Lanolin, Sorbitan Oleate, Glycerin, Light Mineral Oil, Calamine, Sodium Borate, Manuka Honey, Disodium EDTA, Aloe Barbadosis Leaf Juice, Methylparaben, Propylparaben, Chamomilla Recutita (Matricaria) Flower Extract, Tocopherol, Cod Liver Oil	



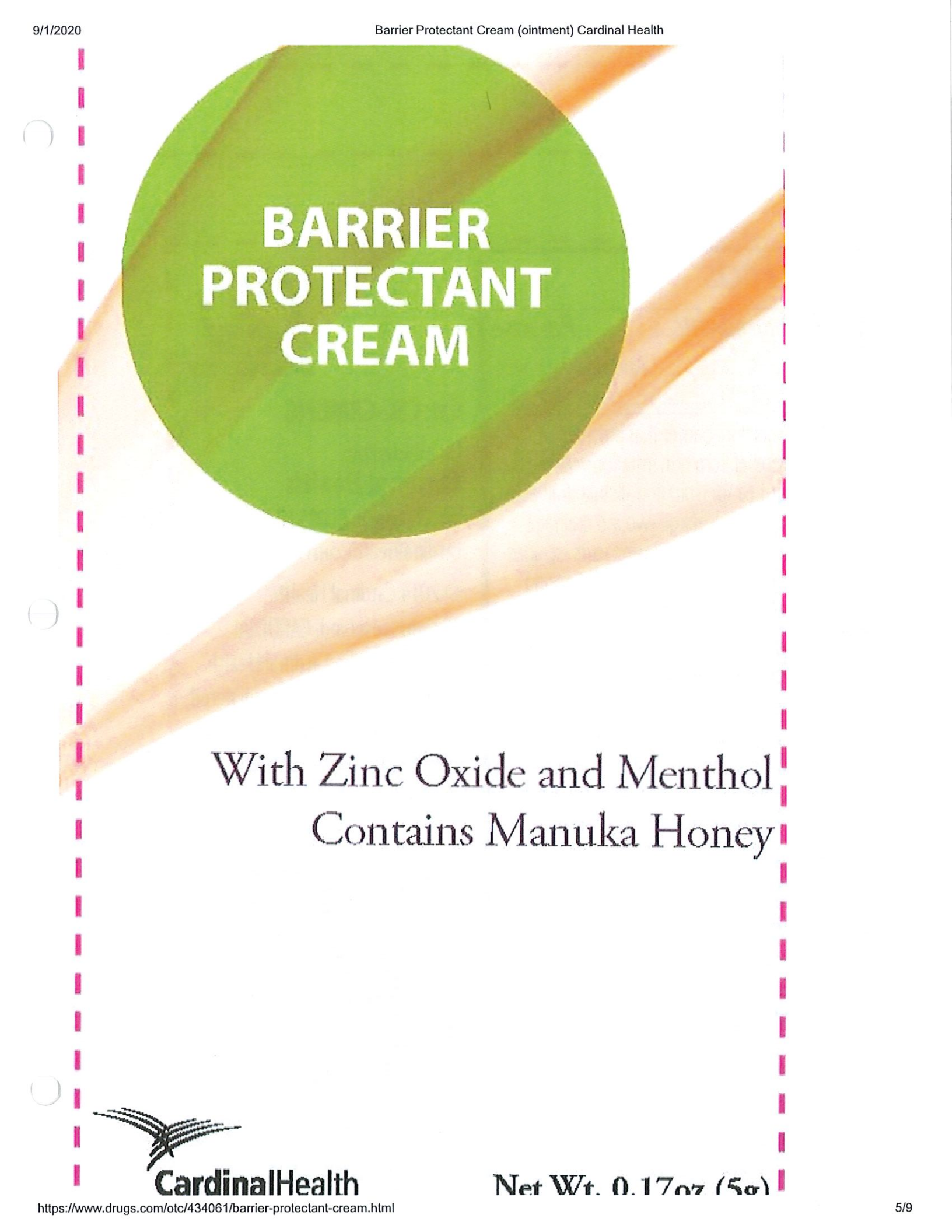
Cardinal Health

Net Wt.
 4oz (113.4g)

3/16"	NO	LABEL	AREA3	/16"
CAP COLOR				

Packet Labels (Box of 150)

NDC 63517-003-34



**BARRIER
PROTECTANT
CREAM**

With Zinc Oxide and Menthol
Contains Manuka Honey



CardinalHealth

Net Wt. 0.17oz (5g)

Drug Facts

Active Ingredients.....Purpose

Menthol 0.1%.....Anorectal Analgesic
Zinc Oxide 20.0%.....Skin protectant

Uses: A moisture barrier that provides temporary relief from skin irritations caused by:
•urine •diarrhea •perspiration •fistula drainage
•feeding tube site leakage •wound drainage (peri-wound skin) •minor burns •cuts •scrapes
•anorectal itching •chafing. Dries the oozing and weeping of poison: •ivy •oak •sumac.

Warnings:

For external use only. •Avoid contact with the eyes •Stop use and contact a physician if condition worsens, symptoms last more than 7 days or clear up and occur again within a few days. •Keep out of reach of children •If swallowed, get medical help or contact Poison Control Center right away.

Do not use: •On deep or puncture wounds
•Animal bites •Serious burns

Directions: •Gently cleanse and remove any urine or fecal matter from treatment area •Pat dry
•Apply a generous amount of product to the affected area •Repeat after every incontinent episode or as needed •For peri-G tubes: •Cleanse as above •Apply thin layer •Secure with drain sponge or product as directed.

Other Information:

Store between 15-30°C (59-86°F)



SINGLE USE ONLY

Cat: **CSC-CRMBHG**

Distributed by:

Cardinal Health

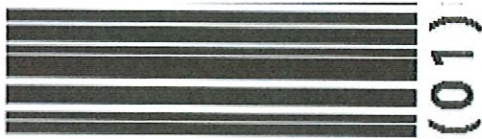
Waukegan, IL 60085 USA 10/14
cardinalhealth.com

© 2014 Cardinal Health.

All rights reserved. CARDINAL HEALTH and the Cardinal Health LOGO are trademarks or registered trademarks of Cardinal Health. All other marks are the property of their respective owners.

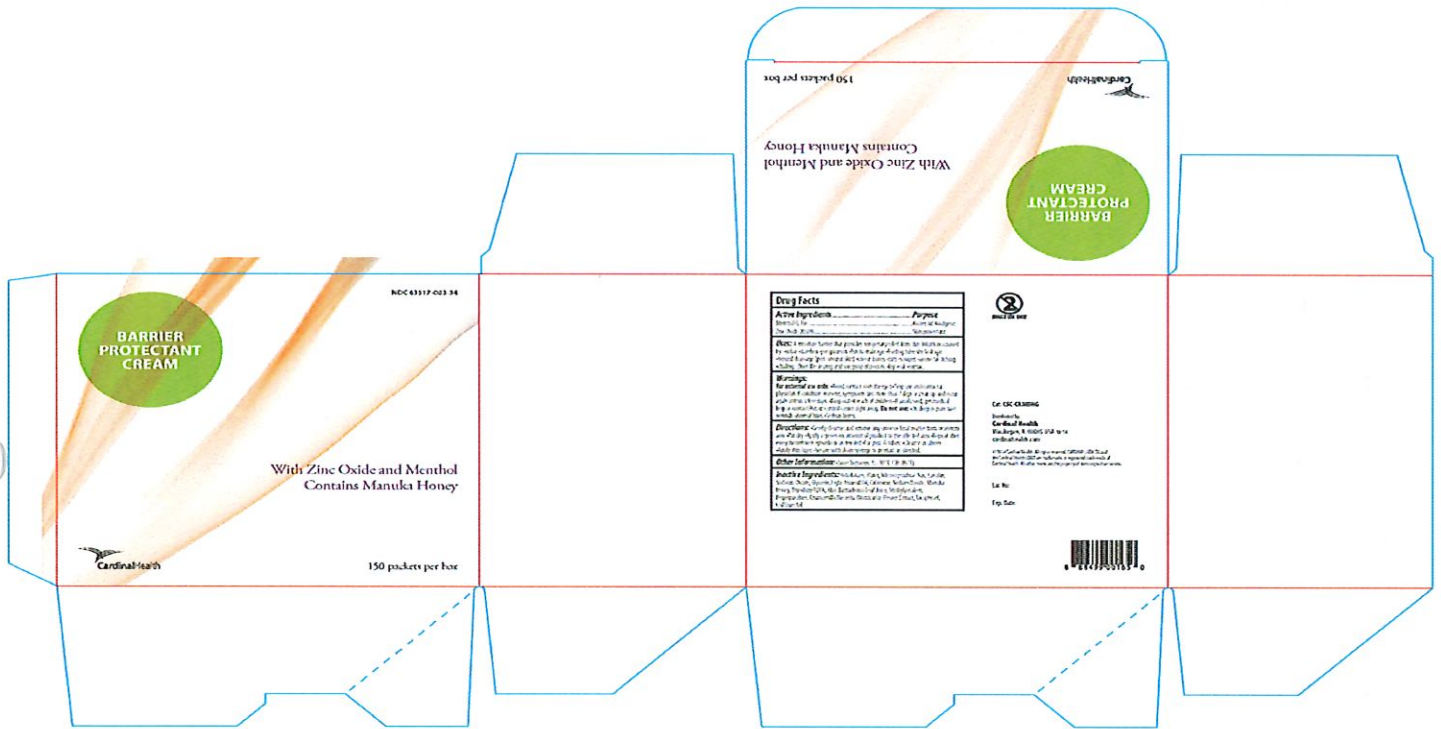


Inactive Ingredients:
see carton for information



Lot No.:

Exp. Date.:



BARRIER PROTECTANT CREAM
barrier cream ointment

Product Information

Product Type	HUMAN OTC DRUG	Item Code (Source)	NDC:63517-003(NDC:51028-002)
Route of Administration	TOPICAL	DEA Schedule	

Active Ingredient/Active Moiety

Ingredient Name	Basis of Strength	Strength

MENTHOL (MENTHOL)	MENTHOL	1 mg in 1 g
ZINC OXIDE (ZINC OXIDE)	ZINC OXIDE	200 mg in 1 g

Inactive Ingredients

Ingredient Name	Strength
ALOE VERA LEAF	
FERRIC OXIDE RED	
CHAMOMILE	
COD LIVER OIL	
EDETATE DISODIUM	
GLYCERIN	
LANOLIN	
LIGHT MINERAL OIL	
HONEY	
METHYLPARABEN	
MICROCRYSTALLINE WAX	
PETROLATUM	
PROPYLPARABEN	
SODIUM BORATE	
SORBITAN MONOOLEATE	
TOCOPHEROL	
WATER	

Product Characteristics

Color	pink	Score	
Shape		Size	
Flavor		Imprint Code	

Contains**Packaging**

#	Item Code	Package Description
1	NDC:63517-003-31	113 g in 1 TUBE
2	NDC:63517-003-32	57 g in 1 TUBE
3	NDC:63517-003-34	150 POUCH in 1 BOX
3		5 g in 1 POUCH

Marketing Information

Marketing Category	Application Number or Monograph Citation	Marketing Start Date	Marketing End Date
OTC monograph final	part346	01/15/2015	

Labeler - Cardinal Health (961027315)

Document Id: 9d14b560-aeae-535e-e053-2a95a90a1e04

Set id: 539d9aac-75cf-4efd-bb3e-b465563304ca

Version: 3

Effective Time: 20200126

Cardinal Health

